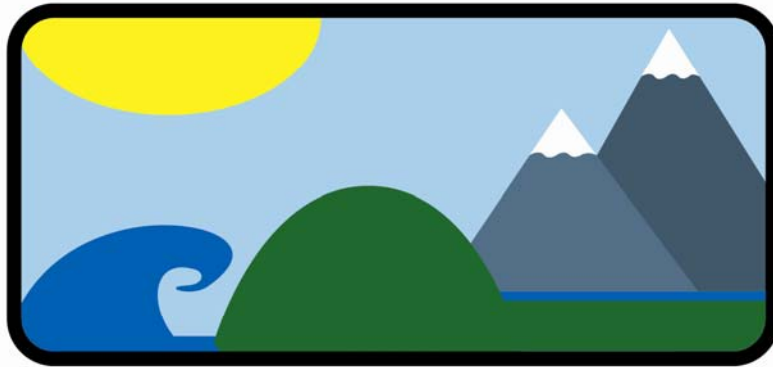


PARTNERIAETH AWYR-AGORED

Profiad • Mwynhau • Llwyddo



Experience • Enjoy • Achieve

OUTDOOR PARTNERSHIP

Performance Review

2005/06

September 2006

CONTENTS

	PAGE
SECTION ONE	
1.0 Introduction	3
2.0 Performance Indicators, activity targets and outcomes	4-5
SECTION TWO	
3.0 successes and challenges	
3.1 Working in Partnership	6-7
3.2 Participation	8-10
3.3 Fulfilling Potential	11
3.4 Leadership and Training	12
3.5 Employment of local people	13
3.6 Welsh Medium Provision	13
3.7 Funding	14
3.8 General administration	15-16
SECTION THREE	
4.0 Summary	17
Appendices:	
Appendix 1: 3 Year Implementation Plan	18-23
Appendix 2: Key Performance Indicators, targets and outcomes 2005-2006 by Local Authority area.	24-26

SECTION ONE

1.0 Introduction

The North West Wales Outdoor Partnership is an organisation made up of a wide and diverse group of agencies.

It is funded by the Welsh Assembly Government, through the Sports Council for Wales and the three local authorities of Anglesey, Conwy and Gwynedd. Partnership members include Plas Menai, Plas y Brenin, Conway Centre, North East Wales Outdoor Education Services, Mountain Leader Training Wales, Snowdonia-Active, University of Wales Bangor, The Countryside Council for Wales and Urdd Gobaith Cymru. Observer status is held by The Welsh Assembly Government, The Sports Council for Wales, and The Welsh Language Board.

Its key objective is to improve opportunities for more local people in North West Wales to achieve their potential through outdoor activities.

This report provides the evidence of the Outdoor Partnership's first full year of operation, following the appointment of four key members of staff in October 2005.

The report assesses the progress made against the strategic aims and targets outlined in the North West Wales Outdoor Partnership's 3 year Implementation Plan. It highlights successes and challenges in the Outdoor Partnership's planned work programmes as well as reconciling year end outputs against Operational Plan targets.

The first section reports on progress made against the specific targets in the 3 year implementation plan and activity/programme targets and outcomes set in October 2005 in each county and concentrates on a general review of the progress made.

The second section of the report outlines the key successes and challenges for each section of the Outdoor Partnership's key areas of work.

The data within this report was collated from registers and participant databases from all the activities and programmes organised and delivered through the Outdoor Partnership. The process involved the Outdoor Activity Development Officers submitting data collection forms at the end of March (Oct 05-March 06) and at the end of August (April 06-Aug 06) to the Senior Project Manager (SPM).

2.0 Performance Indicators, Activity Targets and Outcomes

This section sets out the Outdoor Partnership's main programme/activity targets for the year. The tables below report on the actual year end achievements against the targets that were set for the year via the Implementation Plan (**bold**) and work programmes within each local authority. The outcomes have been colour coded in a 'traffic light' format to illustrate where targets have been met or exceeded (green); where there were problems reaching the outturn target (amber) and where there are significant end of year differences from the agreed targets (red).

Performance Indicators, targets and outturns for the 2005-2006 year

Communication / Networking

Performance Indicators (PIs)	2005/06 Target	2005/06 Actual
No. of meetings attended with schools, community groups, youth groups, outdoor centres/providers, NGB's, other relevant groups and organisations.	None set	246
No. of links made between schools/youth group and outdoor centres and providers	30	34
No. of Outdoor Forums held	3	3

Participation

PIs	2005/06 Target	2005/06 Actual
Audit of current outdoor activity provision and resources	1	1
No. of community outdoor clubs established	6	8
Training for teachers/youth workers	1	2
No. of outdoor activity programmes organised	30	70
Adult participation	60	292
Junior participation	750	1469

Fulfilling Potential

PIs	2005/06 Target	2005/06 Actual
No. of new improvement/competitive opportunities provided	2	16
No. of development centres/centres of excellence established	None set	1

Leadership and Training

PIs	2005/06 Target	2005/06 Actual
No. of individuals identified and working towards obtaining relevant leadership/coaching qualifications	12	82
No. of individuals attending training courses	6	34
No. of individuals qualified as instructors/leaders	None set	29
No. of current active instructors/leaders	12	44

No. of Welsh speaking current active instructors	None set	24
No. of leadership training opportunities created through the medium of Welsh	2	2

Employment of local people

<u>PIs</u>	<u>2005/06 Target</u>	<u>2005/06 Actual</u>
No. of secondary schools associated with local centres in partnership with Careers Wales.	6	6
No. of workshops organised in schools in partnership with careers Wales	None set	4
No. of pupils attending workshops	None set	14
No. of new work experience opportunities created	None set	10
No. of local people on new trainee / centre assistants schemes	*None set	1
No. of Volunteer Instructor (VI) schemes established within local centres	*None set	1
No. of local people accessing these VI schemes	*None set	5

* Priority areas for the future

Marketing

<u>PIs</u>	<u>2004/05 Target</u>	<u>2005/06 Actual</u>
Produce bilingual website	1	1
Logo and stationary	Logo/ stationary	Complete

Funding

<u>PIs</u>	<u>2005/06 Target</u>	<u>2005/06 Actual</u>
Funding for general project costs	None set	£10,000.00
Funding for clubs	None set	£1749.00
Funding for schools/youth services	None set	£19,400.00
Funding for training and development	None set	£10,000.00

Welsh Medium Provision

<u>PIs</u>	<u>2005/06 Target</u>	<u>2005/06 Actual</u>
Database of Welsh speaking instructors*	1	Ongoing
Database of Welsh language terminology for outdoor activities*	1	Ongoing

* Welsh Language Board led projects

3.0 KEY SUCCESSES AND CHALLENGES

Section Two of the Report highlights some the key successes during the first year of operation and highlights some of the challenges for the Outdoor Partnership.

3.1 WORKING IN PARTNERSHIP

Successes

Partnership work with relevant organisations and bodies has been the key to the success of the Outdoor Partnership in its first year of operation. The following links have been made during the first year of operation:

- Links with schools, Education Services, FE and HE establishments across North West Wales to promote and support outdoor opportunities.
- Working closely with Leisure Development Officers, PESS Co-ordinators, Rural Leisure Officers, Healthy Living Co-ordinators, Disability Sports Development Officers.
- Working with Mentrau Iaith Conwy, Gwynedd and Mon developing resources and opportunities through the medium of Welsh.
- Working closely with Bwrdd Iaith Cymru to secure funding for Mountain Biking activities in Conwy; providing and promoting adventure programmes and events for youths and juniors through the medium of Welsh.
- Meetings with the Welsh Sports Association, Glanllyn, MLTW, WYA and WCA collating information on the number of Welsh speaking instructors/coaches within their NGBs, developing Welsh resources and training opportunities.
- Partnership work with Youth Services within each LA to promote and highlight opportunities for young people, providing coach education for Youth Leaders and accessing funding for activity programmes throughout the year.
- Established contact and currently working closely with Welsh Canoe Association, Welsh Yachting Association, Mountain Leader Training Wales, UK Mountain Leader Training Board, British Mountaineering Council, British Orienteering Federation.
- Established links with Outdoor Centres and Private Providers across North West Wales via OADO's and meeting with the Association of Heads of Outdoor Education Centres to identify future opportunities.
- Regular meetings with Duke of Edinburgh and John Muir Award Officers to promote and deliver a range of programmes both in-curricular and extra curricular programmes.
- The Outdoor Partnership has established contact with all existing outdoor clubs in North West Wales via the OADO's and Outdoor Forums exploring ways of increasing capacity within the clubs, supporting events and assisting with funding applications.
- Networking with Young Farmers development officer in Conwy highlighting opportunities for: Funding, Training, Volunteering, Employment opportunities.
- Countryside Wardens Services – Networking closely with Warden Service in Conwy to develop resources for outdoor adventure activities across the county, promoting and delivering activities as part of the Walking Festival organised in partnership with Warden Service.
- Forestry Commission – Education Ranger and Area Manager – Working to promote active use of forestry and developing and promoting Mountain Biking
- Meeting with Snowdonia National Park Chief Executive and Officers to explore ways of working with the SNP in future activities and programmes.
- Working closely with SNP Wardens.

- Established links with Leisure Centres across North West Wales to explore ways of utilising swimming pools, climbing walls and AALA licenses for future programmes and activities.

Other:

- Presentations to Sport and Leisure Development Services in each of the Counties.
- Presentations to various community groups and clubs.
- Presentation to Snowdonia National Park Wardens.
- Presentation to the Countryside Recreation Network (representatives from Home Nations).
- Olympic Roadshow at Plas Menai.
- Interviews with Wedi 7, Uned 5, Radio Cymru and local media.

The infrastructure and outdoor education provision varies in each county which will reflect the work programmes of the OADOs. Thirty four new links have been made between schools and youth services and their local Outdoor Centres and Providers across North West Wales. In Gwynedd, the Development Officer has been working closely with Cynnal, developing procedures which will allow schools in Gwynedd access to the Outdoor Centre in Rhyd Ddu, managed by Gwynedd Youth Services.

Outdoor forums have been established in Conwy and Anglesey to bring together key partners to share information and good practice and look at future developments in each county. The aim is for the forums to become fully constituted.

FREE access to Llyn Padarn has been negotiated for local watersports clubs who meet the agreed criteria (affiliated to their National Governing Body, use qualified and/or experienced coaches) of the Local Authority and the Outdoor Partnership.

Challenges

- Continue to develop strong links with key partners.
- Due to the nature and size of Gwynedd there will be a need to establish an outdoor forum in each of the 3 regions within the County.

3.2 PARTICIPATION

Successes

All targets for participation have been exceeded during 2005-2006.

An audit of current outdoor provision across North West Wales was completed in January this year. The results of the audit influenced the Outdoor Partnership's work programmes and activities and provided a benchmark for the Outdoor Partnership to measure its successes over the next 3 years.

Seventy activity sessions at foundation and participation level have been developed, promoted and delivered across the 3 counties, catering for children, young people, families and adult groups. These activities formed the basis of 7 out of the 8 Outdoor Clubs established during the year.

The Outdoor Partnership has worked closely with local community groups, clubs, schools, youth services, leisure services and other relevant groups and organisations to ensure suitable and appropriate opportunities have been provided. Examples of some of the activity programmes include:

- A comprehensive school holiday adventure programme for children and young people delivered across the 3 counties, in Partnership with Leisure and Youth Services and local outdoor providers. The range of adventure programmes includes both introductory days in climbing, mountain biking, canoeing, orienteering, multi-activities, kite surfing and problem solving activities and more specific courses such as 2 day development courses in Climbing and Kayaking.
- Introductory 'street orienteering sessions and events' in Community First areas for junior, youth and residents in local parks to increase community participation in 'doorstep' activities and provide a deeper understanding of the sport of orienteering and promote pathways into participation in the sport.
- In partnership with Youth services, youth clubs across North West Wales, young people took part in introductory sessions at various Outdoor Centres. Activities included climbing, orienteering, problem solving activities and high ropes course.
- Introductory climbing sessions using local climbing walls (specific sites such as the Beacon Climbing Wall), leisure centre walls and outdoor centre walls for young people and adults across the 3 counties.
- Over 300 youngsters across North West Wales took part in various introductory orienteering days and events in partnership with local schools, the British Orienteering Federation and Eryri Orienteers as part of the schools' curricular and extra curricular activities.
- Conwy Canoe Festival in partnership with local canoe clubs with over 170 local residents attending the festival over the weekend. Sessions included Sea Kayaking, Open Canoe Trips on the Conwy River, General Paddling, Play boating, Sprint Racing, Rafted Canoe Trips on sea, Canoe Games.
- Introductory mountain biking skills activities in primary schools across the 3 counties in partnership with the British Cycling Union's 'Go-Ride' scheme. Providing coach education and resources for teachers.
- Working closely with existing Awards such as the John Muir Award and the Duke of Edinburgh Award to promote and assist the delivery of the awards in local schools with the aim of developing skills in both adventure sports and environmental conservation.
- A series of 6 weeks of introductory climbing sessions for Adults, based at a local climbing wall to promote climbing wall skills and increase adult participation locally,

also working in partnership with other walls in the area – (Plas y Brenin & Beacon Climbing Centre) to induct participants to use on their walls.

The number of community based outdoor clubs established over the last 11 months has exceeded the targets set. These clubs are developing really well with 3 of the 8 clubs fully constituted with the remainder adopting a constitution in the coming months.

The clubs established include:

1. Clwb Beicio Mynydd LLANRWST Mountain Biking Club
2. 'No Limits' Climbing Club based at the leisure centre in Llandudno Junction catering for young people with disabilities.
3. Junior Climbing Club based at the Conway Centre, Llanfair PG
4. Clwb Antur Dyffryn Peris Adventure club in Llanberis
5. Clwb Antur David Hughes
6. Clwb Antur Dyffryn Ogwen
7. Clwb Antur MENAI Adventure Club based at Plas Menai
8. Clwb Antur Mon, in partnership with Anglesey Youth Services and Cymorth (early stages of development)

The above clubs regularly cater for over 20 members with the majority of the clubs targeting families.

The types of clubs include:

- Stand alone community clubs run solely by volunteers in the local community with support from the Outdoor Partnership.
- An AALA Licensed Leisure Centre based club, again run by volunteers and supported by the leisure centre and the Outdoor Partnership.
- Outdoor Centre based clubs (Plas Menai National Watersports Centre run by the SCW and the Conway Centre run by Cheshire County Council) run by volunteers and supported by the centres (providing equipment, instruction and expertise) and the Outdoor Partnership.
- Extra curricular outdoor clubs in secondary schools run by qualified teachers at the school and supported by the Outdoor Partnership (accessing equipment, coach education, safety management advice).
- An outdoor club run by Youth Services on Anglesey providing an exit route for young people from 19 youth clubs.

In Partnership with Cynnal, an Outdoor Activities training day has been organised for school teachers in Gwynedd and Anglesey in September this year, highlighting the types of outdoor adventure activities available, facilities/providers available to schools and looking at the new National Curriculum Programmes of Study.

In partnership with PESS, Eryri Orienteers and the British Orienteering Federation (BOF), 19 teachers from the Coastal areas of Conwy attended the BOF Level 1 Coach Training Award in Orienteering.

A sub-group of the Outdoor Partnership is currently exploring the possibilities of establishing a new nationally accredited bilingual Award embracing lifelong skills and outdoor adventure activities for primary school children. It is hoped that the award will assist schools to meet the new National Curriculum Programmes of Study.

Challenges

- Accessing funding to support the work programmes of the OADOs.
- Continue to work with outdoor centres (expertise, facilities, equipment and often natural resources) to unlock opportunities for local communities.

- Introduce a coordinated programme of outdoor activities for children and young people during school holiday periods.
- In order to increase participation at KS2 and KS3 the Outdoor Partnership will assist schools to increase their capacity to deliver outdoor adventure activities. Our biggest challenge will be supporting schools in meeting the new National Curriculum Programmes of Study, in partnership with PESS, Cynnal and other relevant organisations due to:
 - Perceived risk element in Outdoor Adventure Activities
 - Lack of existing experience of teachers in the schools
 - Cost and time element of training
 - The number of schools involved.

3.3 FULFILLING POTENTIAL

Successes

Again, targets set within the Implementation Plan have exceeded expectations despite the fact that the main areas of work for the first year have been focused on foundation and participation level activities.

The improvement/competitive opportunities have been established mainly in Conwy due to its existing infrastructure, providing exit routes for young people wishing to progress to the next level in their chosen sport. These youngsters have been attending foundation and participation level activities that have been organised by the Leisure Development and NE Wales Outdoor Education Services, over the last couple of years.

Examples of new improvement/competitive opportunities established under the Outdoor Partnership include:

- Orienteering Festival for Conwy Primary Schools as a progression from the taster sessions and development programmes run in the schools.
- North West Wales orienteering league, targeting families, in partnership with Eryri Orienteers.
- A number of Mountain Biking development courses for Adults and juniors who have come through the introductory courses.
- Mountain Biking orienteering competition – County based in partnership with the local mountain biking club.
- A number of 2 day climbing intermediate courses for adults and juniors in partnership with leisure centres, local providers.
- A number of 2 day kayaking intermediate courses run in partnership with the local canoe clubs and outdoor providers.
- Skill Development Courses in Climbing, Mountain Biking and Kayaking – 2 and 4 day residential courses at Plas y Brenin, funded by the Thomas Howell Education Fund for North Wales and the Mountain Training Trust. Thirty four youngsters were selected from across North West Wales. These youngsters demonstrated commitment, enthusiasm and talent whilst participating in the Outdoor Partnership's programmes and clubs.

Challenges

The audit highlighted that there are very few improvement/competitive opportunities in outdoor activities for young people in North West Wales, especially for schools.

Our challenge will be to work cross-county to provide regular competitive opportunities for schools and clubs. A regional orienteering festival for schools and inter-clubs climbing wall league/competition have been highlighted for the coming year.

3.4 LEADERSHIP AND TRAINING

Successes

The target for volunteer recruitment has been exceeded. Eighty two people have been identified as potential leaders/coaches and have been working towards obtaining leadership/coaching qualifications.

Of the 82 identified 35 have attended training courses in the following:

- British Orienteering Federation Level 1 Coaching Award – 19 teachers (qualified)
- Local Climbing Wall Leaders Award – 8 people including teachers/youth leaders, parents from the Adult Climbing Courses & 2 parents associated with the local climbing club on Anglesey (now competent to lead on site specific climbing walls)
- *Scottish Mountain Bike Leaders Award – 1 volunteer from Llanrwst MTB Club attended training.
- British Canoe Union Level 2 Kayak Award – 1 Leisure Centre member of Staff (now qualified)
- Mountain Leader Training (summer) - 6 days residential – 4 local young people, funded through the Thomas Howell Education Fund for North Wales.

Nant Bwlch yr Haearn Outdoor Education Centre and Plas Y Brenin National Mountain Centre have each secured £5,000 funding from the Thomas Howell Education Fund for North Wales to support local young people (18-24yrs) through Outdoor Leadership Qualifications.

The Outdoor Partnership is currently developing a Volunteer Log Book for young people (14-18 year olds) to record their experiences and achievements and prepare them for National Governing Body Awards in the future.

*No similar bike award operates in Wales and England

Challenges

- Volunteer Recruitment & Retention: Obtaining leadership/coaching qualifications in outdoor activities can be a lengthy process in comparison to the more traditional sports, depending on individual experience and background. An example of this would be the Mountain Leader Award (Summer) where, understandably, candidates are required to have a minimum of 1 year's experience of mountain walking prior to attending a 6 day ML training course, then consolidate their training and experience for a further year (often minimum time scale) before attending a 5 day Assessment Course to qualify as a mountain leader.
- Funding volunteers to attend relevant coaching/leadership qualifications. The cost of attending courses is, understandably, higher than traditional sports averaging from £200-£600 just for the training element of the course. The usual funding routes for clubs would be the Community Chest Grant which offers funds of up to £750 per club per year for start up costs. This figure is insufficient to support numerous volunteers from any particular club.

3.5 EMPLOYMENT OF LOCAL PEOPLE

Successes

The Outdoor Partnership has been working closely with Careers Wales to provide advice and raise the profile of employment opportunities in the outdoor sector. Activities have included:

- Regular meetings with Key personnel in Careers Wales.
- Assisting Careers Wales to update 'A career in the Outdoors' leaflet.
- Working in partnership with Careers Wales to promote suitable work-based experience opportunities for year 12 students from 6 secondary schools across the region. Twenty students will be attending simulated work experience at their local outdoor centres in September. Centres include the Conway Centre (Anglesey), Nant Bwlch yr Haearn (Conwy) and The Aberglaslyn Hall (Leicestershire run Outdoor Education Centre in Gwynedd).

FE/HE forum

Challenges

- To bring together key partners in the outdoor industry and education establishments to look at current and future changes in Education and explore ways of working together in the future.

3.6 WELSH MEDIUM PROVISION

Successes

All programmes and activities organised and delivered by the Outdoor Partnership have been run bilingually and where possible, Welsh speaking instructors/leaders have been recruited. Examples of some of the successes include:

- Welsh language terminology for outdoor activities has been developed by the Welsh Language Board and is currently in the consultation process.
- Welsh Medium sub-group has been formed and meet quarterly.
- Menter Iaith Conwy is in the process of securing £10,000 of funding to provide a programme of training for people through the medium of Welsh.
- A series of walks aimed at young people, in Partnership with Clwb Mynydda Cymru with the aim of attracting more local young people to the club and to provide opportunities through the medium of Welsh.
- Walking Group Leader Award through the medium of Welsh, in partnership with Plas y Brenin and the Duke of Edinburgh Award and the Outdoor Partnership, aimed at teachers and youth leaders responsible for running DofE in Gwynedd.

Challenges

- Database of Welsh Speaking Instructors – Issues relating to Data Protection Act is making it difficult to collate the information.
- Work with NGB's to identify potential Welsh speaking tutors/trainers/assessors.
- Provide training and leadership opportunities through the medium of Welsh.
- To work with NGBs, the Welsh Language Board and training providers to develop bilingual resources for candidates and tutors.

3.7 FUNDING

Successes

Working in partnership, the Outdoor Partnership has accessed £41,149.00 from various sources of funding to support programme costs, community club development and training and leadership.

- Funding for general project costs - £10,000.00 - Thomas Howell Education Fund for North Wales to provide outdoor activities opportunities for young people in North Wales – Nant Bwlch yr Haearn & Plas y Brenin
- Funding for clubs - £1749.00 - £749 Community Chest funding for Climbing Club at the Conway Centre and £1000 sponsorship for the Canoe Festival in Conwy.
- Funding for schools/youth services - £9,000.00 Cymorth Funding on Anglesey to support outdoor programmes and activities for children and young people living in the Cymorth areas. £10,400.00 NOF funding, through the youth services in Gwynedd, to support activities for disaffected young people in Gwynedd.
- Funding for Training / Development - £10,000.00 - Thomas Howell Leadership Funding for young people (18-24yrs) to access leadership/coaching qualifications in North Wales held by Nant Bwlch yr Haearn and Plas y Brenin.

The Outdoor Partnership has established a working group to investigate the potential for attracting private sector sponsorship.

Gelert Ltd, a Porthmadog based company, has provided clothing and personal equipment for our development staff.

Challenges

- The cost of delivering outdoor activity programmes and events is high; therefore our challenge will be to continue to seek funding to support the Development Officers' work programmes.
- Assist clubs to access funding for community club development.
- On a broader basis, seek overall project costs to ensure the sustainability of the Outdoor Partnership beyond the initial 3 years of funding.
- In partnership with Menter Iaith Conwy, secure funding to provide a leadership and training programme for local people over the age of 24 years, through the medium of Welsh.

3.8 GENERAL ADMINISTRATION / MANAGEMENT / STAFFING

Successes

The following key tasks have been completed:

Staffing

- Appointment of Senior Project Manager, based at Plas y Brenin and Plas Menai
- Appointment of Outdoor Activities Development Officers. Anglesey - based in Sports Development and Conway Outdoor Centre. Conwy – based in Sports Development and Nant Bwlch yr Haearn Outdoor Education Centre. Gwynedd – based at Rhyd Ddu Outdoor Centre and has access to the Sports Development Department

Marketing:

- Corporate Logo for the Outdoor Partnership produced.
- Stationary and marketing material developed and distributed.
- Sponsorship through Gelert for clothing for the Outdoor Partnership staff members.

Website:

- Website produced in line with the official Launch of the Outdoor Partnership in early February this year.

A basic website was developed to coincide with the official launch in February this year. The website development is proving to be more complex and time consuming than first anticipated. In order to build updating functions for the Officers and the Senior Project Manager, more time has been invested in the development of the bilingual website. The development of the English version of the site is now complete and it is hoped that in October this year the Outdoor Partnership will be in a position to launch their bilingual site and distribute electronic newsletters to all its associate members.

Electronic Newsletter

- A comprehensive mailing list of associate members has been established.

General administration

- Quarterly Partnership meetings organised and well attended by professional officers of the organisations involved.
- Quarterly Executive Group meetings held to monitor progress, attended by Executive Officers of the Partnership.
- Quarterly Management meeting held to line manage the Senior Project Manager post.
- Fortnightly Team meetings between Senior Project Manager and Development Officers.
- Quarterly local authority management meetings between development officers, local authority line managers and senior project manager.
- Individual meetings between SPM and development officers.
- Small working groups have been established and meet regularly to deal with specific issues e.g. Sponsorship, the Outdoor Award etc.

4.0 SUMMARY

Overall, the Outdoor Partnership has had a very successful first year of operation and has taken many steps in achieving its mission to improve opportunities for more local people in North West Wales to achieve their potential through outdoor activities.

The report highlights achievements, where the outcomes exceeded the target sets, whilst still appreciating that some areas will need to be addressed in future years. Our challenge now is to review some of the targets for next year and build upon and maintain the momentum.

A year into the project, the Outdoor Partnership has 3 Outdoor Activity Development Officers rooted in the 3 local authorities, networking with their colleagues in each of the sports development departments and are managed by the Senior Project Manager.

Our biggest challenge in this coming year will be to consolidate and strengthen the emerging networks and club structures.

Consideration will also be given to accessing additional funding to facilitate the further expansion of the network.

North West Wales Outdoor Recreation Partnership
3 year Implementation Plan

Area of Work	Performance Indicator	Target	Timescale	How Monitored	Who Responsible
1.Participation To facilitate the provision of club based outdoor recreation opportunities					
a) Audit of current provision	Production of an audit of current provision across NW Wales	Production of Audit.	By end of Jan. 2006	DOs to report through the SPM	DOs / SPM
b) Club based provision	Number of community/ school based/ youth service based clubs established under the NWWORP umbrella	Establishment of a min. Of 2 clubs under the NWWORP umbrella in each local authority area each year.	Year 1: By October 2006 Year 2: By October 2007	DOs to report through the SPM	DOs / SPM
	Production of a template/s of the "model club"	Production of the template	By Oct 2007	SPM to report to partnership	SPM
	Base Line Participation and ongoing monitoring of participation rates	Production of an appropriate methodology for the assessment of participation on Outdoor Activities in NW Wales	By Oct 2006 and ongoing.	SPM to report to partnership	SPM/ SCW/ UWB
c) Facilitation of foundation level provision within schools/ youth and community organisations in partnership with LEAs, Cynnal, Youth Services, Urdd etc	Identification and promotion of foundation level opportunities	Production of a handbook for schools/ youth and community organisations outlining opportunities.	Annual: Yr 2 by Sep. 2007		
		Facilitation of a programme of Training Sessions for Teachers/ Y. Workers	1 event per year.	SPM to report to partnership.	SPM/ Cynnal/ LAs

	Participation rate increase: % of school children receiving high quality intro. exp.	5% annual increases in provision at KS 2 and KS3	Year 1: By July 2007 Year 2: By July 2008	DOs to report to Partnership via SPM	DOs/ SPM/ LAs
<p>2. Fulfilling Potential To identify appropriate opportunities for individuals to progress to higher levels of performance, competition or leadership</p> <p>a) Audit of opportunities to develop skills through regular participation.</p> <p>b) the identification of appropriate improvement / competitive opportunities</p>	<p>Mapping Exercise.</p> <p>Number of new improvement /competitive opportunities provided.</p>	<p>To produce a map of pathways to progression in relation to 2 activity areas per year.</p> <p>Provision of 2 improvement /competitive opportunities on an annual basis</p>	<p>Year 1: By March 2007 Year 2: By March 2008</p> <p>Yr 1: By October 2006</p>	DOs to gather data	<p>SPM</p> <p>SPM/ DOs</p>
<p>3. Leadership and Training</p> <p>To facilitate appropriate recruitment, retention, training and support mechanisms to develop a network of competent and experienced volunteers</p> <p>a) mapping of training/ development opportunities</p>	Mapping Exercise	To produce a map of	Year 1: By March 2007 Year 2: By March 2008	SPM to partnership	SPM

<p>b) identification of potential leaders</p> <p>c) provision of mentoring/ appropriate training for volunteers</p>	<p>Number of individuals identified and working towards / obtaining relevant leadership/ coaching qualifications</p> <p>Implementation of a support programme for volunteers (Activity based and generic e.g. Running Sport etc.).</p>	<p>pathways to progression in relation to 2 activity areas per year.</p> <p>Identification of a minimum of 2 potential leaders associated with each new club established</p> <p>Provision of mentoring for above leaders dependent on background.</p> <p>Implementation of a volunteer support network and programme</p>	<p>Medium / long term (Dependent on background/ experience of individuals identified)</p> <p>Medium / long term (Dependent on background/ experience of individuals identified)</p> <p>By Dec. 2006</p>	<p>DOs to report to SPM and then to Partnership</p> <p>DOs to report to SPM and then to Partnership</p> <p>SPM to report to Partnership</p> <p>SPM to report to Partnership</p>	<p>DOs</p> <p>SPM/ DOs</p> <p>SPM</p> <p>SPM</p>
<p>4. Employment of local people To increase levels of employment for local people within the outdoor industry</p> <p>a) Working with Careers Wales to provide suitable advise and raise profile</p> <p>b) Working with local schools and outdoor centres to encourage development of</p>	<p>Establishment of key contact and regular meetings with CW</p> <p>Each DO to work with 2 secondary schools per year and associated local centres</p>		<p>By March 2006</p> <p>Year 1: By March 2007 Year 2: By March 2008</p>	<p>SPM to report to partnership.</p> <p>DOs -SPM to report to partnership.</p>	<p>SPM</p> <p>DOs / SPM</p>

<p>suitable work experience opportunities</p> <p>c) Working with local FE and HE providers to create a sensible pathway for progression</p> <p>d) Creating opportunities to improve skill levels of those already employed</p>	<p>Establishment of an FE/HE working group to initiate curriculum development</p> <p>Provision of appropriate development opportunities.</p>		<p>By March 2006</p> <p>Access to development opportunities outlined in 2)</p>	<p>SPM to report to partnership.</p> <p>SPM to report to partnership.</p>	<p>SPM</p> <p>SPM/ DOs</p>
<p>5. Welsh medium Provision To support mainstreaming of Welsh language development in the context of outdoor recreation</p> <p>a) Establishment of a working group / sub-group to the Partnership supported by the Welsh Language Board to focus on specific initiatives.</p> <p>b) organisation of a joint programme of events in partnership with WLB and local Mentrau Iaith based on raising the profile of Welsh Medium provision and supporting Welsh speaking volunteers</p>	<p>Establishment of the group to meet 3 times per year</p> <p>Production/ maintenance of a data base of Welsh speaking leaders/ potential leaders</p> <p>Development of leadership training opportunities through the medium of Welsh</p> <p>Development of a calendar of Welsh medium activities (social and activity based)</p>	<p>Meetings held.</p> <p>Data base produced</p> <p>Organisation/ promotion of training opportunities.</p> <p>Ongoing programme of events.</p>	<p>By Nov. 2005 and ongoing</p> <p>By Oct. 2005</p> <p>By Jan. 2006 and ongoing</p> <p>Min. 2 events per year.</p> <p>Min. 2 events per year.</p>	<p>Report to WMMG and Partnership</p> <p>Report to WMWG and Partnership</p> <p>Report to WMWG and Partnership</p> <p>Report to WMWG and Partnership</p> <p>WLB to report to WMWG and partnership</p>	<p>WMWG/ SPM</p> <p>WMWG / SPM</p> <p>WMWG / SPM</p> <p>WMWG / SPM</p> <p>WLB/ WMWG/ SPM</p>

c) Production of a Welsh language Terminology for Outdoor Activities	Production, launch and distribution of the material.		By Jan. 2006	SPM/ WMWG to report to partnership	SPM/ WMWG
6. Funding <i>Identification and accessing of appropriate project funding either directly to the partnership or through clubs/ associated organisations</i>	Funding for General Project Costs Funding for Clubs Funding for Schools Funding for Equipment Funding for Training / Development	SPM to set targets.	By Jan. 2006 and ongoing on an annual basis.	SPM to report to partnership	SPM/ DOs
7. General / Admin					
a) Web Site	Production and ongoing Maintenance of a Website to communicate the work of NWWORP	Web site produced and operational.	By end of Jan. 2006	Report to Partnership	SPM
b) Electronic News Letter	Creation of a mailing list (mainly electronic) of Associate Members Production of an electronic newsletter on a quarterly basis.	Mailing List established. Newsletter to be produced and distributed.	By end of Dec. 2005 By end of Jan. 2006 and ongoing.	Report to Partnership Report to Partnership	SPM/ DOs SPM/ DOs
c) Marketing	Production of a suitable logo, stationary and marketing materials	Logo and stationary produced.	By end of Nov. 2005	Report to Partnership	SPM
d) General Administration	Administration of	On-going	On-going	Report to Partnership	SPM/ DOs

in relation to supporting the operation of the partnership	meetings and support to partnership members				
--	---	--	--	--	--

Other general planning and administrative tasks to include: production and review of work programmes, organisation and recording of meetings, production of financial reports, production of grant applications, liaising with other organisations.

DO: Development Officer
 WG: Working Group
 WMWG: Welsh Medium Working Group
 WLB: Welsh Language Board
 CW: Careers Wales
 UWB: University of Wales Bangor
 Las: Local Authorities

AD 27/05/05

Key Performance Indicators, targets and outturns for October 2005 - August 2006	Mon		Conwy		Gwynedd		Total
Communication/networking	Target	Out turn	Target	Out turn	Target	Out turn	
Number of meetings attended with schools, community groups, youth clubs, outdoor centres/activity providers, clubs and other relevant groups/organisations.	None set	35	None set	54	None set	62	151
Number of links made between schools and outdoor providers/clubs.	8	8	0	1	12	25	34
Number of Outdoor Forums held.	2	2	2	1	2	0	3
Participation							
Number of community outdoor clubs established under Outdoor Partnership	2 clubs	1	2 clubs	2	2 clubs	2	5
Number of school based extra curricular clubs established under Outdoor Partnership		1		0		1	2
Number of youth services based clubs established under Outdoor Partnership		1		0		0	1
Number of activity programmes organised under the Outdoor Partnership umbrella	6	6	12	46	12	18	70
Adult (male) participation within NWWORP activity programmes and clubs	0	0	18	79	12	75	154
Adult (female) participation within NWWORP activity programmes and clubs	0	0	18	68	12	70	138
Boys (under 18) participation within Outdoor Partnership clubs	20	161	65	136	65	47	344
Girls (under 18) participation within Outdoor Partnership clubs	20	155	65	49	65	41	245
Boys (under 12) participation within Outdoor Partnership clubs	20	24	65	149	65	87	260
Girls (under 12) participation within Outdoor Partnership clubs	20	24	65	99	65	96	219
Number of school children at KS2 participating in the new outdoor activities provided within curriculum, extra curricular or out of hours residential under Outdoor Partnership	0	0	60	63	0	0	63

Key Performance Indicators, targets and outturns for October 2005 - August 2006	Mon		Conwy		Gwynedd		Total
Number of school children at KS3 and KS4 participating in the new outdoor activities provided within curriculum, extra curricular or out of hours residential under Outdoor Partnership	8			16		80	106
Number of people in FE/HE establishments participating in the new outdoor activities provided within college time or after college hours under Outdoor Partnership	0	10	8	0	60	0	0
Number of schools, community groups and youth services now using their local outdoor providers/centres through Outdoor Partnership	6	0	0	4	0	13	36
Number of young people participating in the new outdoor activities provided within youth clubs under Outdoor Partnership	100	19	0	0	6	121	232
		111	0		100		
Fulfilling potential							
Number of new improvement/competitive opportunities provided in county under NWWORP	0	2	1	13	1	1	16
Number of development centres/centres of excellence established under NWWORP	0	0	0	0	0	1	1
Number of local people achieving regional/national squads	0	0	0	0	0	0	0
Leadership and training							
Number of individuals identified and working towards obtaining relevant leadership /coaching qualifications	4	4	4	37	4	41	82
Number of individuals attending training courses	2	2	2	28	2	4	34
Number of individuals qualified as instructors/leaders		0		28		1	29
Number of current active instructors/leaders through Outdoor Partnership	4	3	4	40	4	1	44
Number of current active instructors/leaders who are Welsh speakers	-	0	-	4	-	1	23
Number of leadership training opportunities created through the medium of Welsh	0	0	0	1	0	1	2
Employment of local people							
Number of workshops organised within schools in partnership with careers Wales.	0	0	0	1	0	3	4

Key Performance Indicators, targets and outturns for October 2005 - August 2006	Mon		Conwy		Gwynedd		Total
Number of pupils attending workshops	-	0	-	12	-	2	14
Number of work experience opportunities created in partnership with outdoor centres/providers	0	0	0	0	0	3	3
Number of pupils attending work experience opportunities.	0	0	0	0	0	10	10
Number of local people on Centre Assistant and other similar schemes in NWW	0	0	0	0	0	0	0
Number of Volunteer Instructor Schemes created, in partnership with local outdoor providers.	0	0	0	0	0	1	1
Number of local people accessing Instructor Schemes in the county as a result of Outdoor Partnership.	0	0	0	0	0	5	5